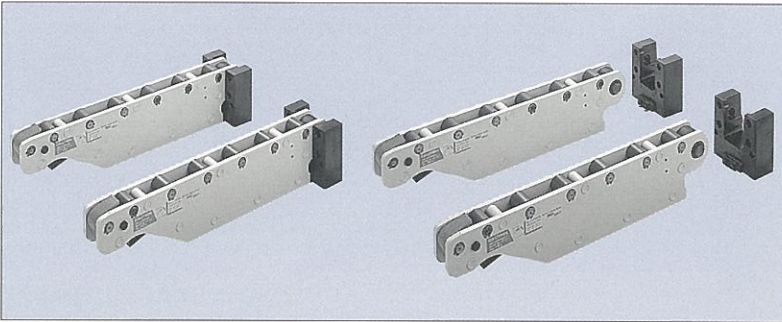


# MODEL RC ROLLER PRE-ROLLER

RC roller is a detachable type pre-roller



## MODEL DESIGNATION

RC 380 0 ※  
 ① Design No.

※ is our control number. A sequential number beginning with "-1" is displayed on the product. The initial model has no number. The product is compatible even if this number is different.

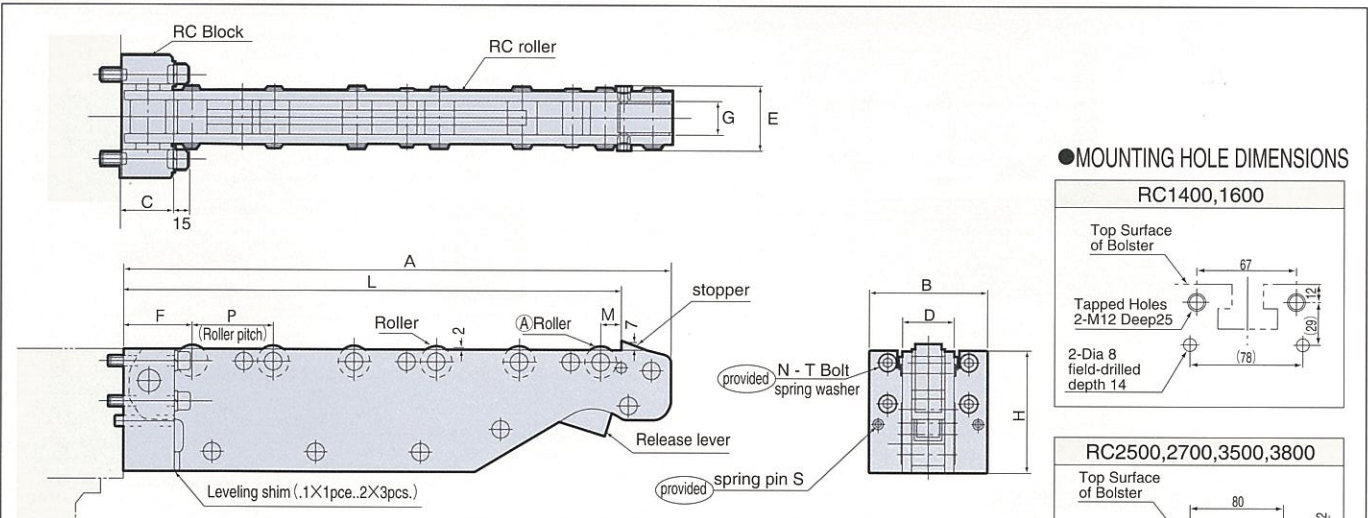
- ① Frame size (block height) possible mold drawing out dimension
- 140 : 79 mm × 400 mm
  - 160 : 79 mm × 600 mm
  - 250 : 119 mm × 500 mm
  - 270 : 119 mm × 700 mm
  - 350 : 159 mm × 500 mm
  - 380 : 159 mm × 800 mm
  - 450 : 200 mm × 500 mm
  - 490 : 200 mm × 900 mm

## SPECIFICATIONS

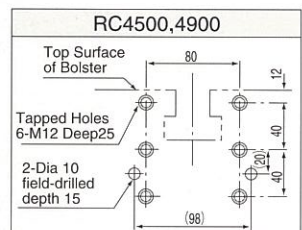
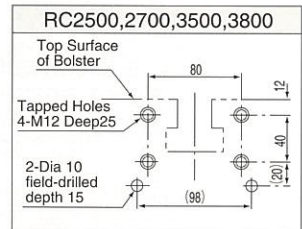
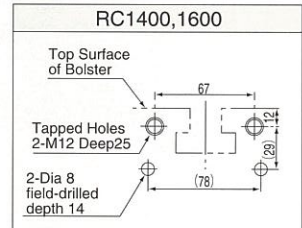
| Model                       | RC1400  | RC1600 | RC2500 | RC2700 | RC3500 | RC3800 | RC4500 | RC4900 |
|-----------------------------|---|--------|--------|--------|--------|--------|--------|--------|
| RC Block Model ※1           | RC10B1  |        | RC20B1 |        | RC30B1 |        | RC40B1 |        |
| Block Height (mm)           | 79  |        | 119    |        | 159    |        | 200    |        |
| Maximum Die Travel (mm)     | 400   | 600    | 500    | 700    | 500    | 800    | 500    | 900    |
| Load Capacity per Pair (kg) | 900   | 600    | 1600   | 1200   | 2500   | 1600   | 3200   | 1800   |
| Frame Width (mm)            | 38.5  |        |        | 50     |        |        |        |        |
| Frequency of Use            | 20 times/day (Please consult us for more frequent use.) |        |        |        |        |        |        |        |

※1 RC rollers and mounting blocks are sold separately. Specify the required number individually.

## OUTLINE DIMENSIONS



### ● MOUNTING HOLE DIMENSIONS



### ● DIMENSIONS

| Model          | RC1400 | RC1600 | RC2500  | RC2700 | RC3500 | RC3800 | RC4500 | RC4900 |
|----------------|--------|--------|---------|--------|--------|--------|--------|--------|
| A              | 450    | 650    | 550     | 750    | 550    | 850    | 550    | 950    |
| B              | 96     |        |         |        | 115    |        |        |        |
| C              | 44     |        |         |        | 52     |        |        |        |
| D              | 38.5   |        |         |        | 50     |        |        |        |
| E              | 47.8   |        |         |        | 59.8   |        |        |        |
| F              | 60     |        |         |        | 70     |        |        |        |
| G              | 20.5   |        |         |        | 32     |        |        |        |
| H              | 79     |        | 119     |        | 159    |        | 7.87   |        |
| L              | 400    | 600    | 500     | 700    | 500    | 800    | 500    | 900    |
| M              | 18     |        |         |        | 21     |        |        |        |
| N              | 2      |        |         | 4      |        |        |        | 6      |
| P              | 54     | 52     | 82      | 76     | 82     | 79     | 82     | 80     |
| S              | φ 8×56 |        | φ 10×63 |        |        |        |        |        |
| T              | M12×70 |        | M12×75  |        |        |        |        |        |
| Qty. of Roller | 7      | 11     | 6       | 9      | 6      | 10     | 6      | 11     |

### 〈Precautions for mounting and operation〉

1. Processing dimensions are shown for case of die lifted 2mm above bolster.
2. Tightening torque of mounting bolt is 98N·m.
3. When used with RA or RB rollers, adjust all rollers so they are level. Fix the position of the RC mounting block with spring pin.
4. Adjust the level of RC roller by leveling shim so that the outboard roller A is about 2mm higher than the raised bolster rollers.